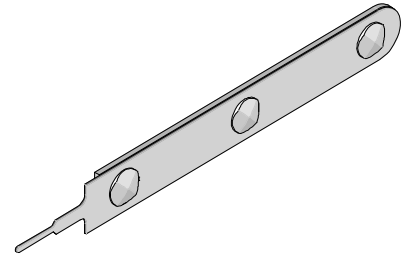




**Extractor Tool  
Instruction Sheet  
Order No. 11-03-0043  
Engineering No. HT60923A**



## FEATURES

- This tool is designed to extract many different terminal series from various plug and receptacle housings. See Chart below.

## SCOPE

Products: Micro-Fit 3.0™ and 1.25mm (.049") Pitch PicoBlade™ Crimp Terminals, 2.00mm (.079") Pitch CLIK-Mate™ Wire-to-Board Crimp Terminal, and OBD-II Crimp Terminal, 4.00mm (.157") Pitch.

Terminal Series No.	Housings Series No.	Terminal Order No.					
43030	43025	43030-0001	43030-0002	43030-0003	43030-0004	43030-0005	43030-0006
	43645	43030-0007	43030-0008	43030-0009	43030-0010	43030-0011	43030-0012
	44133	43030-0051	43030-0052	43030-0053	43030-0056	43030-0057	43030-0058
		43030-0059	43030-0080	43030-0081	43030-1001		
43031	43020	43031-0001	43031-0002	43031-0003	43031-0004	43031-0005	43031-0006
	43640	43031-0007	43031-0008	43031-0009	43031-0010	43031-0011	43031-0012
	44300	43031-0016	43031-0017	43031-0018	43031-0019	43031-0051	430310052
		430310053	43031-0057	43031-0059	43031-0102	43031-0103	43031-0106
46235	43025	46235-0001	46235-0002	46235-0003	46235-0004		
	43645						
	44133						
50058	51021	50058-8000	50058-8099	50058-8100	50058-8200	50058-8300	50058-8400
		50058-8500					
50061	51022	50061-8000	50061-8018	50061-8028	50061-8099	50061-8100	50061-8118
		50061-8128					
50079	51021	50079-8000	50079-8000	50079-8053	50079-8099	50079-8100	50079-8153
		50079-8000	39-00-0414	39-00-0413			
50080	51022	50080-8000	50080-8100				
50125	51047	50125-8000	50125-8100				
50133	51047	50133-8000	50133-8100				
50147	52266	50147-8000	50147-8100				
50148	52213	50148-8000	50148-8100				
50420	51115	50420-8000					
	51116						
502438	502443	502438-0000	502438-0100				
	502494						

Note: All Individual terminals may be extracted from the housing using this Tool.

**OPERATION:**

**For 43030, 43031, and 46235 Terminal Series:**

1. Insert the tip of the tool on either side of the terminal until it stops. See Figure 1.
2. Rotate tool clockwise then counter-clockwise approximately 25° to 30° in each direction, once or twice.
3. Repeat steps 1 and 2 on the opposite side of terminal.
4. Pull on the wire and remove the terminal from the housing. See Figure 2.

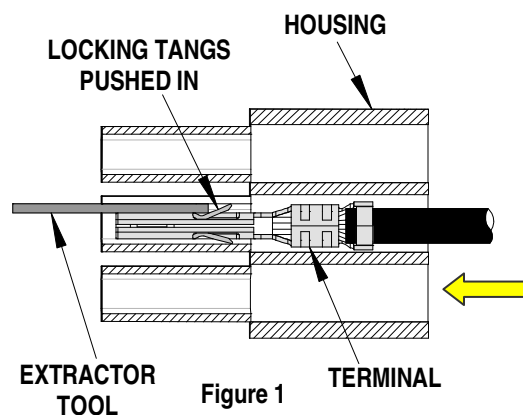


Figure 1

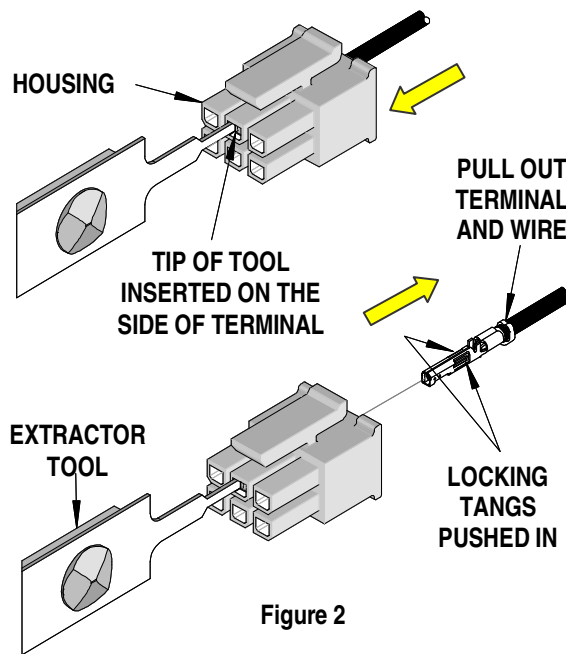


Figure 2

**NOTE:** When a terminal is removed in this manner the locking tangs are damaged and the terminal is not reusable.

**For 50058, 50061, 50079, 50080, 50125 and 50133 Terminal Series:**

1. Hold the housing with the locking tang facing up. Bend the wire down and insert the tip of the tool into the housing under the locking tang. See Figure 3.
2. Hold the wire against the extractor tool and pull out the wire and the extractor tool at the same time. See Figure 4.

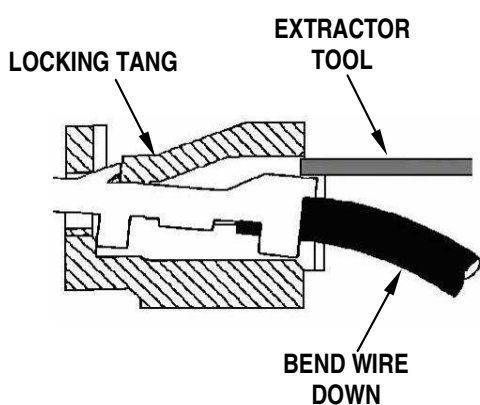
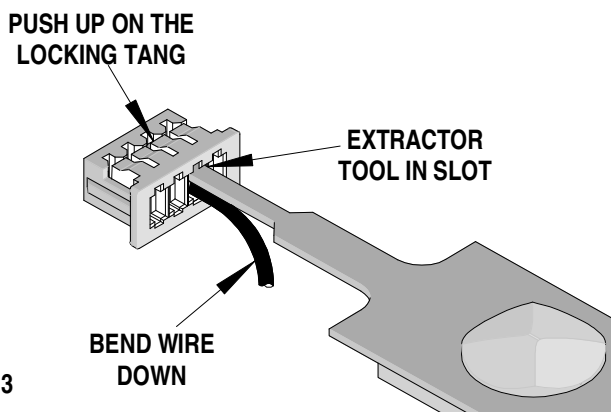


Figure 3



**NOTE:** When re-using the housing remember to bend back the locking tang when inserting another terminal.

**For 50147 and 50148 Terminal Series:**

1. For terminal series 50147, push the terminal forward in the arrow direction before using the Extractor Tool.
2. Insert the tip of the Extractor Tool on an angle above the terminal into the slot on the top of the connector housing.
3. While rotating the extraction tool down, bend the terminal locking tang down and push the terminal back through the connector slot. Make sure that the terminated wire is pulled out at the same time. See Figure 5.

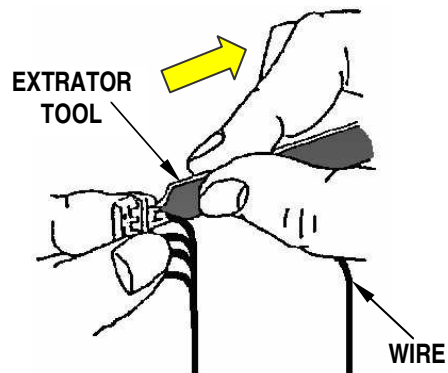


Figure 4

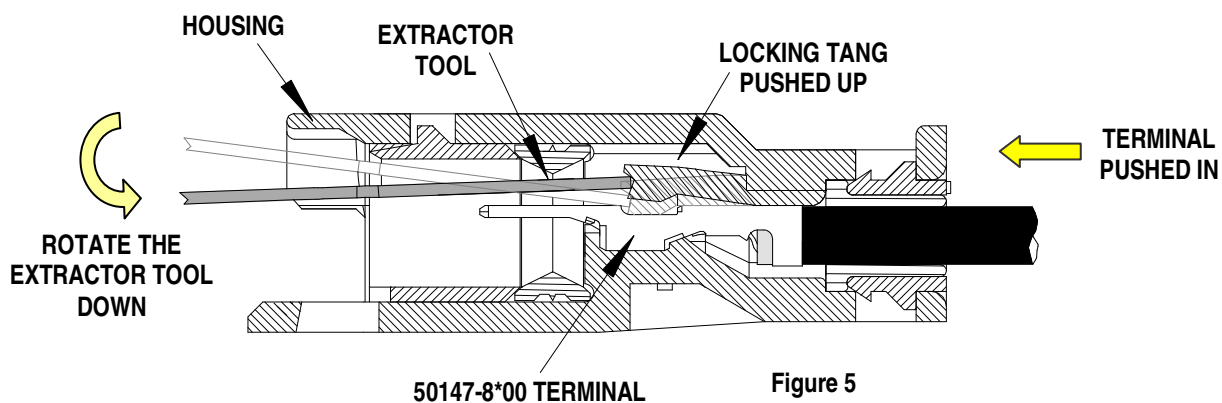


Figure 5

4. For terminal series 50148, push the terminal forward in the arrow direction before using the Extractor Tool.
5. Insert the tip of the Extractor Tool on an angle above the terminal into the slot on the bottom of the connector housing.
6. While rotating the extraction tool up, bend the terminal locking tang down and push the terminal back through the connector slot. Make sure that the terminated wire is pulled out at the same time. See Figure 6.

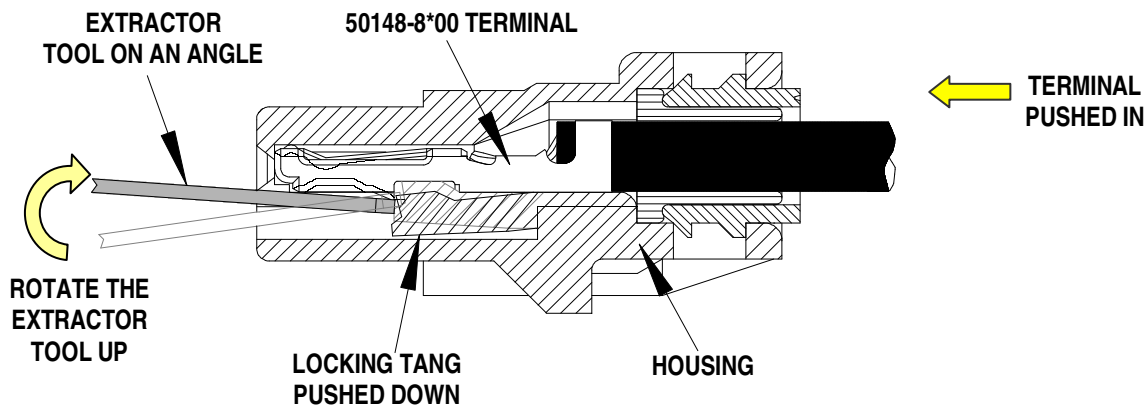


FIGURE 6

**For 50420 Terminal Series:**

1. Push the terminal forward in the arrow direction before using the Extractor Tool.
2. Insert the tip of the Extractor Tool on an angle above the terminal into the slot on the top of the connector housing.
3. While rotating the extraction tool down, bend the terminal locking tang down and push the terminal back through the connector slot. Make sure that the terminated wire is pulled out at the same time. See Figure 7.

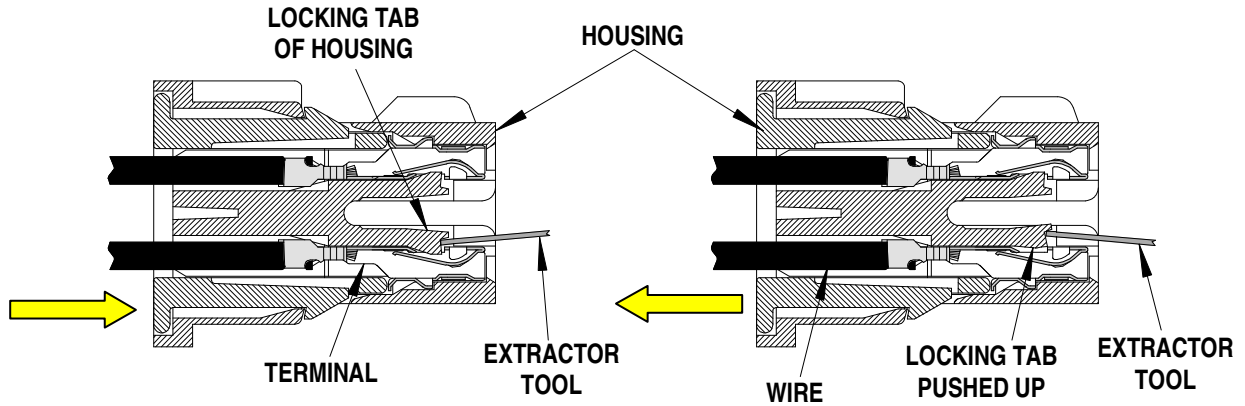


Figure 7

**For 502438 Terminal Series:**

1. Push the terminal forward in the arrow direction before using the Extractor Tool.
2. Insert the Extractor Tool into the slot above the terminal in the connector housing as shown in Figure 8.
3. Gently push the extractor tool till it stops. The housing locking tab should be bent up.
4. Pull the terminal and the terminated wire back through the Connector slot along with the extractor tool in the arrow direction as shown.

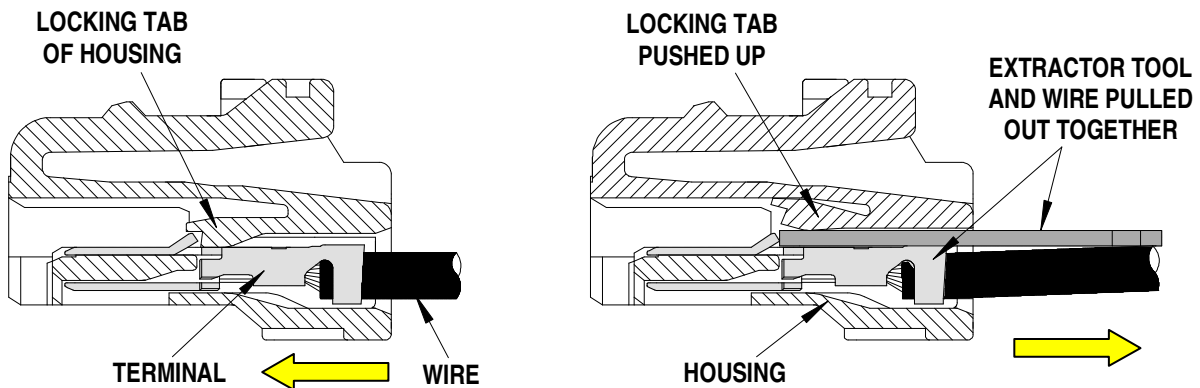


Figure 8

Molex does not offer repair parts for this Tools due to the inexpensive nature of the tool

**CAUTION:** Molex specifications are valid only when used with Molex terminals, applicators and tooling.

**Americas Headquarters**  
 Lisle, Illinois 60532 U.S.A.  
 1-800-78MOLEX  
 amerinfo@molex.com

**Far East North Headquarters**  
 Yamato, Kanagawa, Japan  
 81-462-65-2324  
 feninfo@molex.com

**Far East South Headquarters**  
 Jurong, Singapore  
 65-6-268-6868  
 fesinfo@molex.com

**European Headquarters**  
 Munich, Germany  
 49-89-413092-0  
 eurinfo@molex.com

**Corporate Headquarters**  
 2222 Wellington Ct.  
 Lisle, IL 60532 U.S.A.  
 630-969-4550  
 Fax: 630-969-1352

Visit our Web site at <http://www.molex.com>